




Open an image
 Go to: Image>Adjustments> Desaturate
 Go to :Window>Channels

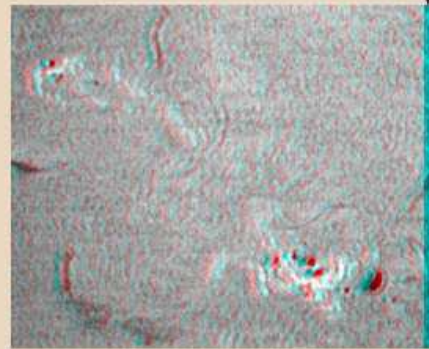
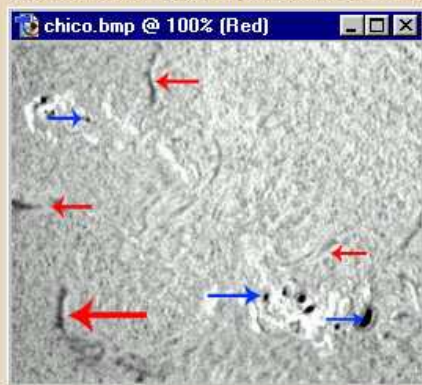


On the Channels window make click on the "Red" Channel.

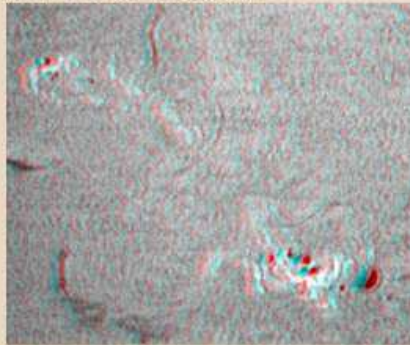
Use the Move Tool  to shift the red channel image to the left.

Make click on "RGB" on the channel window
 Use a Red R/ Blue L or Red L/Green R glasses to see the results:

Crop  the image and remove the unwanted areas.
 Click on the red channel to work only on it.
 Use the Smudge Tool , and shift features like filaments, to the right to lift, to the left to down.



Make click on RGB on the channel window to see the results:



Go to Image>Adjustments>Color balance and Hue/Saturation to add color:

